



Morningstar Ratings (29/02/2012)

Equity Fund (unlimited life)

P Class Capitalisation

Investment Policy

30/03/2012

The sub-fund invests primarily in a diversified portfolio of shares and/or transferable securities issued by companies incorporated, quoted or traded in any of the following emerging country : the People's Republic of China, Hong Kong and Taiwan. Historical information prior to this fund's launch date refers to ING (L) Invest Taiwan fund.

Key Figures

Currency	USD	Launch	30/08/1999	500.00
ISIN Code	LU0119216801	Net Asset Value	30/03/2012	745.96
Bloomberg Code	INGLTP LX Equity	Total Net Assets of the Fund (Mln)	30/03/2012	292.85
Reuters Code	LU0119216801.LUF	Previous month's end NAV	29/02/2012	789.25
Telekurs Code	1163879	Management Fee	30/03/2012	1.50

Top 10

Equities	Main Business	%
1 Taiwan Semiconductor Manufac	IT	5.35
2 China Mobile Ltd	Telecoms	5.17
3 Hon Hai Precision Industry	IT	4.09
4 China Construction Bank-h	Financials	2.98
5 Ind & Comm Bk Of China - H	Financials	2.89
6 Chow Sang Sang Hldg	Consumer Discretionary	2.84
7 Cnooc Ltd	Energy	2.80
8 Petrochina Co Ltd-h	Energy	2.41
9 Aia Group Ltd	Energy	2.35
10 Tencent Holdings Ltd	IT	2.17

Allocation

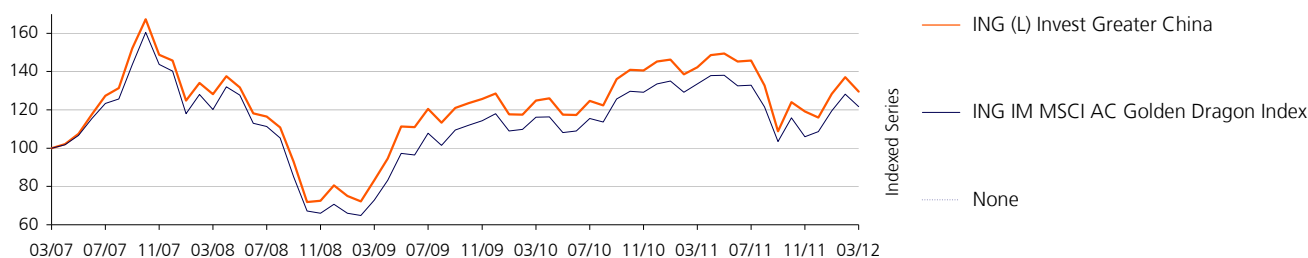
Country	%	Sector	%
China	42.24	Financials	31.90
Taiwan	29.95	IT	20.22
Hong Kong	22.88	Energy	13.49
Bermuda	2.84	Industrials	9.19
Luxembourg	1.16	Telecoms	8.27
Cayman Islands	0.57	Consumer Discretionary	6.99
Macao	0.36	Materials	5.14
		Utilities	3.15
		Consumer Staples	1.67
		Undefined	0.00

Equity Fund (unlimited life)

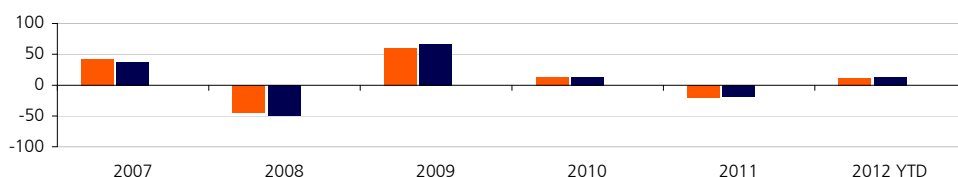
P Class Capitalisation

Chart

30/03/2012

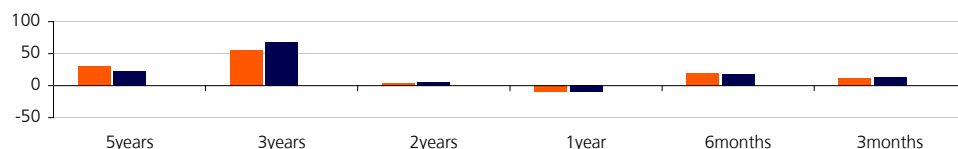


Calendar Year Performance (%)



USD	2007	2008	2009	2010	2011	2012 YTD
■ Fund	42.40	-44.79	59.63	13.05	-20.17	11.64
■ Index	37.63	-49.54	66.66	13.24	-18.67	12.04

Cumulative Performance (%)



USD	5 Years	3 Years	2 Years	1 Year	6 Months	3 Months
■ Fund	29.47	55.48	3.76	-8.98	18.90	11.64
■ Index	21.72	67.07	4.74	-8.81	17.67	12.04

Statistics

USD	1 Year		3 Years		USD	1 Year	3 Years
	Fund	Index	Fund	Index			
Average Annual Return (%)	-8.98	-8.81	15.85	18.66	Annual Alpha (%)	0.63	-2.30
Annual Volatility (%)	30.14	27.96	24.85	24.16	Beta	1.03	1.00
Annual Sharpe Ratio	-0.32	-0.34	0.61	0.74	R-Squared	0.92	0.95
					Annual Information Ratio	0.02	-0.41
					Annual Tracking Error (%)	8.86	5.48

Source: ING Asset Management B.V, Bid-Bid, net dividends reinvested. S&P Fund Ratings, Copyright ©2010 The McGraw-Hill Companies, Ltd. Trading as Standard & Poor's. All rights reserved.

Important Information: Performance quoted above is historical and does not guarantee future results. The price of the Shares in a Fund may go up or down. Investment involves risk including a possible loss to the principal amount invested. Foreign exchange volatility constitutes an additional exchange rate risk.

This leaflet is for informational purposes only and does not constitute an offer of investment products. Please refer to the prospectus for complete details of investment products before investing, available from our office. The Fund is a sub-fund under ING (L) Invest, a variable capital investment company established in Luxembourg, and is recognized under Section 287 of the Securities and Futures Act, Chapter 289 of Singapore Act ("Act").

ING (L) Invest is the responsible person as defined under the Act and has appointed ING Investment Management Asia Pacific (Singapore) Ltd as its corporate representative in connection with the offer of Shares in the Fund. ING Investment Management Asia Pacific (Singapore) Ltd,

Company Registration No: 199602506R, 9 Raffles Place #23-08 Republic Plaza, Singapore 048619, Tel: (65) 6632 3060, Fax: (65) 6535 3393,

Website: www.ingim.com.sg